



ASMP SERIES STANDARD METRI-PACK PRESSURE TRANSDUCER

The ASMP standard series of high performance pressure transducers have been designed for the detection of fluid and air pressures in demanding motorsport and on-vehicle automotive applications. These are ideal for high precision data acquisition or control systems.

The modular construction and programmable amplifier provide a fast delivery time for standard and custom configurations.

Pressure ranges are available between 0 - 15 and 0 - 3000 psi in either Absolute, Gauge or Sealed Gauge reference.

The ASMP Series are race proven and can be found in many race formula around the world.

For OEM applications we have many options available to customize these transducers.

TECHNICAL SPECIFICATIONS

Pressure Reference	Sealed gauge, absolute and gauge
Standard Pressure Ranges (psi)	15, 60, 75, 150, 300, 750, 1500 and 3000
Proof Pressure (overload)	150% of range
Burst Pressure	>300% of range
Accuracy	±0.5% FS combined linearity & hysteresis (CNLH)
Thermal Effects	Zero ±0.02% FS/°F (Sensitivity ±0.02% of reading /°F)
Output	0.5V to 4.5V
Power Supply	5V (±0.5V) Ratiometric or 8-16Vdc
Operating Temperature Range	-5°F to 275°F (-20°C to +135°C)
Compensated Temperature Range	32°F to 250°F (0°C to +125°C)
Construction	Alumina, EPDM, Stainless Steel and Viton
Electrical Connection	Metri-Pack (Packard) 3-Pin 150 Series Connector
Process Connection (Thread Size)	Please see Part Number Configurator - page 2
Protection Class	IP67
EMC Protection & Vibration	EN 50082-1 and Mil-Std-810C, curve L, 20G
Weight	1.5oz
Options	Mating Half Connector, Thread Size and Labelling

PMC/KA Sensors adopts a continuous development program which sometimes necessitates specification changes without notice

PRESSURE | TEMPERATURE | FORCE | TORQUE | POSITION | SPEED | ACCELERATION | GYRO

Sensors For Motorsport

Features

- Integral Metri-pack
- 0-15 to 0-3000 psi
- Rugged Construction
- 5V or 8-16Vdc supply
- ±0.5% Accuracy

Applications

- Coolant
- Brakes
- Water
- Boost
- Fuel
- Oil

sales@pmc1.com

www.kasensors.com

Represented by:



PART NUMBER CONFIGURATOR

Pressure Reference

Pressure Range

Supply Voltage

Accuracy (CNLH)

Accuracy (Thermal Shift)

Electrical Connection

Process Connection

O-Ring Material (Internal)

Special Code 1

Special Code 2

ASMP - [] [] [] [] [] [] [] [] [] []

Absolute Gauge — A
Gauge — G
Sealed Gauge — S

30 psi — P030
60 psi — P060
75 psi — P075
150 psi — P150
300 psi — P300
750 psi — P750
1500 psi — P1K5
3000 psi — P3K0

5Vdc Ratiometric — 4
8-16Vdc — 5

±0.5% FS Combined Linearity & Hysteresis — A
Zero ±0.02% FS/°F (Sensitivity ±0.02% of Reading /°F) — 2

Metri-Pack (Packard) 3-Pin 150 Series Connector — A

3/8 Inch 24 UNF Dash 3 (SAE J514) — A
1/8 Inch NPT Male (ANSI B1.20.1) — B
M10 x 1 Male (ISO 6149-2) — D

EPDM — E
Viton — V

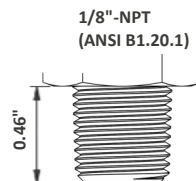
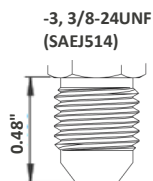
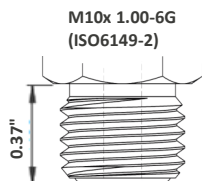
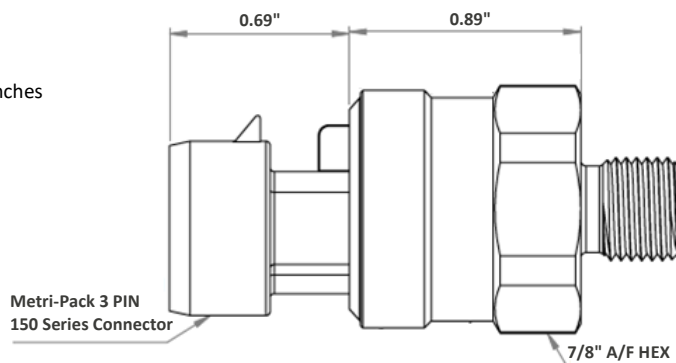
None — 000

None — 000

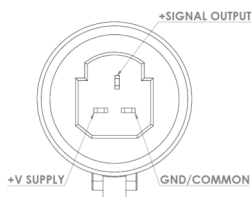
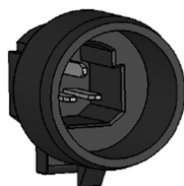
The KA configuration tool is used to specify a standard KA Sensor, other options are available.

MECHANICAL DETAILS

Dimensions in inches



ELECTRICAL DETAILS



*Sense
Analyze
Control*

Sensors For:

- Temperature
- Acceleration
- Pressure
- Position
- Torque
- Speed
- Angle
- Force

Services For:

- Data Logging
- Telemetry
- Controls
- Wiring

Contact Us

KA Sensors
Division of
PMC Engineering LLC
11 Old Sugar Hollow Rd
Danbury, CT 06810
USA

Tel: 203-792-8686
Fax: 203-743-2051

sales@pmcl.com